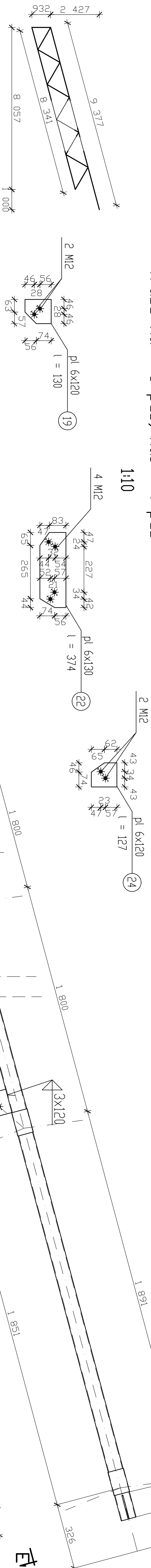


ROOF TRUSS

Truss Ka - 8 pcs; Ka1 - 4 pcs

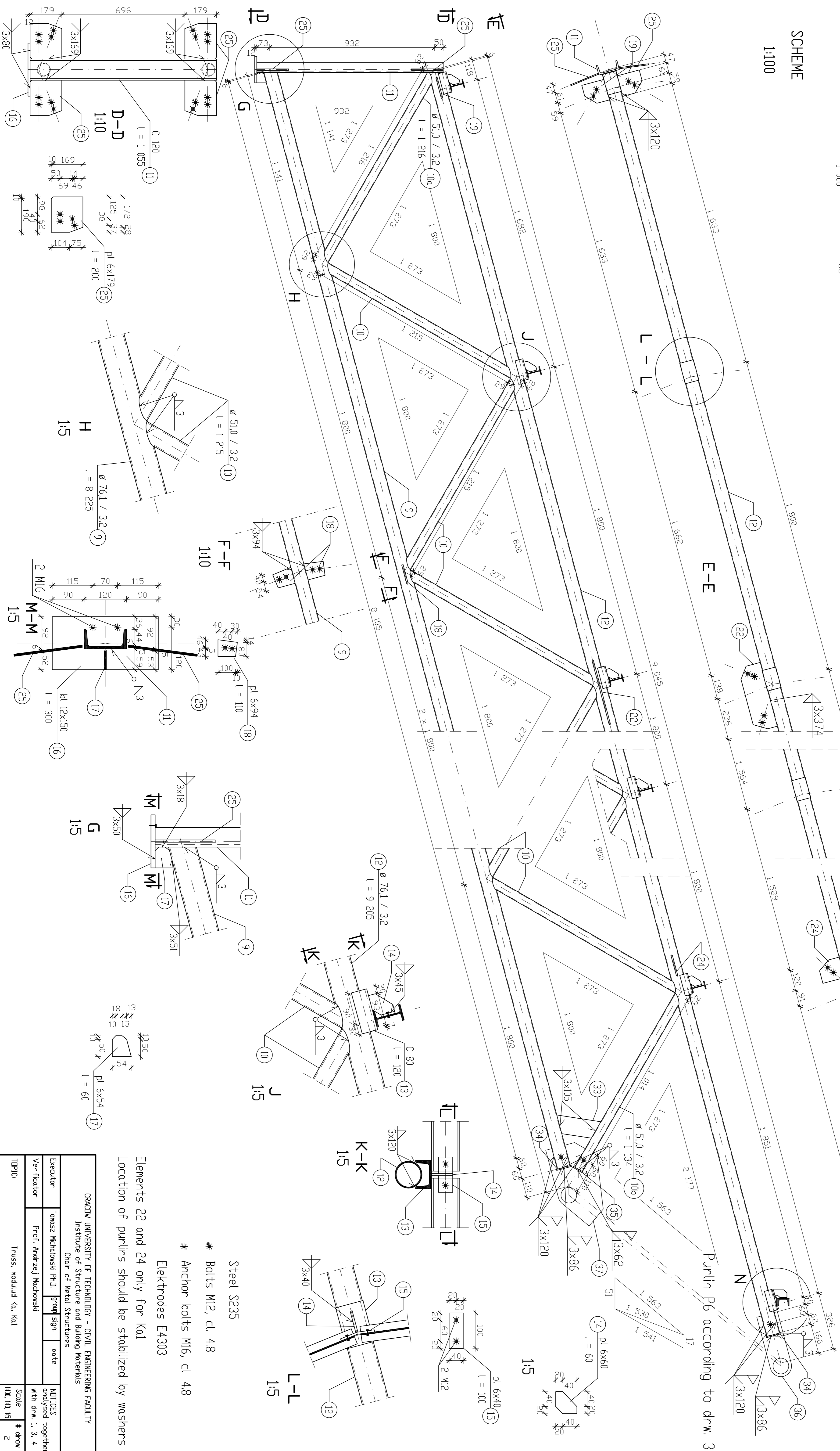
1:10



4

SCHEME

1:100



Steel S235

* Bolts M12, cl. 4.8

* Anchor bolts M16, cl. 4.8

Elektrodes E4303

Elements 22 and 24 only for Ka1

Location of purlins should be stabilized by washers

CRACOVIA UNIVERSITY OF TECHNOLOGY – CIVIL ENGINEERING FACULTY				
Institute of Structure and Building Materials				
Chair of Metal Structures				
Executor	Tomasz Michalowski Ph.D.	group	sign.	date
Verificator	Prof. Andrzej Macchowski			
TOPIC:	Truss; modulul Ko, Ka1		NOTICES analysed together with dwg. 1, 3, 4	Scale 1000, 100, 15
			# dwg	2